

Dear Residents:

The LIRR Expansion Project from Floral Park to Hicksville, one of the region’s most significant transportation infrastructure projects, is now underway throughout communities along the nearly ten mile stretch of Main Line track.

Beginning Thursday, October 18th, the current parking lot, located between Harrison Avenue and 1st Street, will be closed for construction of a state-of-the-art, 537 space, multi-level parking garage.

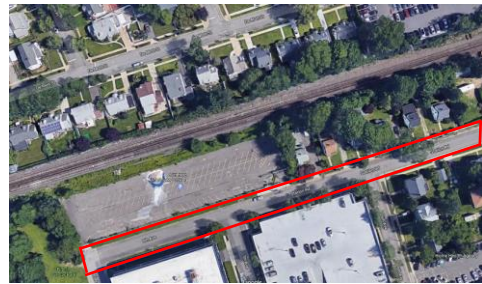
Harrison Garage Construction Facts

- Construction activities are expected to last 24 months. The first eight months will involve external work and the remaining 16 months will be predominantly within the structure.
- The construction teams will work from approximately 7:00 a.m. to 4:00 p.m. and, when necessary, will provide cones, flagmen and signage at the work site. Along 1st Street and Harrison Avenue, between Mineola Boulevard and 3rd Avenue, traffic will be limited to a single lane. 3rd Avenue will have daily partial lane closures.
- In cooperation with Village officials, we are providing alternate parking locations during construction. Please see the maps below:

Existing lot (adjacent to the ball field at Willis Avenue and Copley Court)



Station Road between 5th Avenue and 8th Avenue



PARK IN HIGHLIGHTED AREA

We understand that a construction project of this size may be challenging at times, but it is our responsibility to communicate with you throughout this project so that you may be informed and have your questions answered as promptly and completely as possible. For more information, please contact the project’s 24-hour Hotline: 516.203.4955 or email CommunityOutreach@lirrexpansion.com. You also may visit our website www.LIRRExpansion.com for up-to-date project details.

Respectfully,

Your Mineola Community Ambassadors



Gary Lewi



Seth Sylvan



For more information, please contact the Information Hotline at **516-203-4955** or by email **CommunityOutreach@lirrexpansion.com**. You may also visit our website, **www.lirrexpansion.com**, for up-to-date project details.

A better commute • Less congestion • Cleaner Air • Safer, quieter crossings
Station improvements & parking • Better jobs • Stronger economy • Noise reduction

www.lirrexpansion.com • **CommunityOutreach@lirrexpansion.com**